

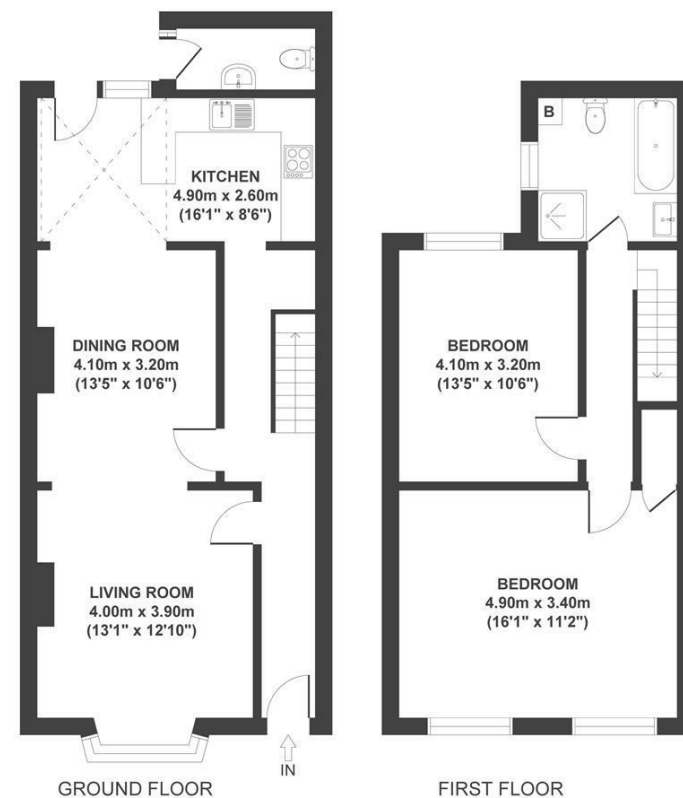
Boardwalk

William Street

TOTTERDOWN, BRISTOL

William Street TOTTERDOWN

APPROXIMATE FLOOR AREA
104 SQM / 1119 SQFT



Boardwalk

William Street

TOTTERDOWN, BRISTOL

£

£440,000



BS3 4TU

zzz

2 Bedrooms



1 Bathrooms

"One of the best things about this home is relaxing on the sofa with a coffee as the morning sun pours through the front window. The open-plan space and sun-trap garden are perfect for hosting."

